

### 3. #\_mail Gateway Solution

- ① #-mail is Korean Govt Standard Registered e-mail service, like as the Germany de-mail & USA confirmed mail service.
- ② @-mail = The Postoffice Ordinary mail,  
#-mail = The Postoffice Registered mail with the contents proof + The Electric Notary Documents
- ③ The Documents Communication Comparison Chart

기존시스템에 보관된 문서를 별도의 다운로드 과정 없이 바로 #메일을 보낼 수 있습니다. 다음과 같이 기존시스템의 ①첨부분서를 선택 하신 후 ②상단의 #메일송신 메뉴에서 ③주소/제목/내용 입력 후 송신하면 됩니다.

Remarks	Paper documents		e-documents		
	Ordi-mail Postoffice	Regist-mail Postoffice	EDI Internet	@-mail Internet	#-mail Internet
Delivery					
Speed	X	X	●	●	●
Convenience	X	X	△	●	●
Security	X	△	●	X	●
Sender verification	X	△	●	X	●
Receiver verification	X	●	●	X	●
Receiving verification	X	●	X	X	●
Reading verification	X	X	X	X	●
Send/Receive Certification	X	●	△	X	●
Legal proof	X	●	X	X	●
Cost	US\$0.5	US\$2.0	free	free	US\$0.1

※ The Korea Service Process with Gateway

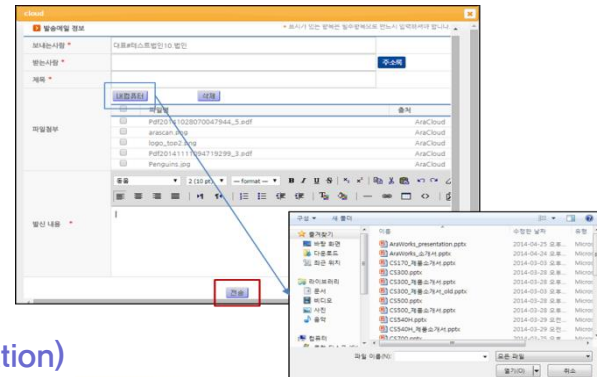
- ① select documents in the current file-server & Web Application System,



- ② "#\_mail Send" Menu select (The gateway connection)



- ③ address, subject, contents Key-in & send with the attached files



➤ @-mail : [id@param.property](mailto:id@param.property), #-mail : id#param.property (by Govt certification)